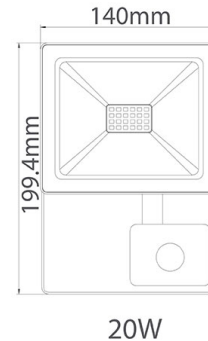
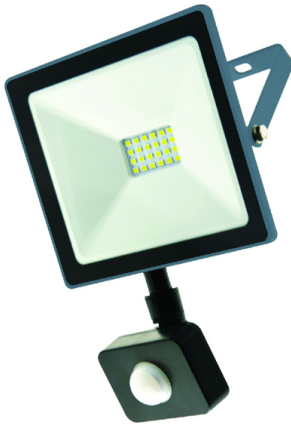


# TECHNICAL DATASHEET

## INDUS-S 20W SMD IP44

12-03-2021



VT/INDUS-S/20W/SMD/6000K/IP44/220V/SENSOR/LED FLD.

NOTES

### General Informations

Stock Code	3021601
HSC/GTIP Code	9405.40.10.00.00
EAN-13 (Inbox Barcode)	6970233838098
EAN-13 (Inbox Barcode)	6970233835141
ITF-14 (Outbox Barcode)	36970233838099
ITF-14 (Outbox Barcode)	36970233835142

### Electrical Characteristics

Current Type	AC
Operation Voltage	220-240 Volt
Operation Frequency	50/60 Hertz
Electrical Current	0,048 Amper
Electrical Current	0,096 Amper
Power	10 Watt
Power	20 Watt
Power Factor	>0.9
Luminous Efficiency	95 lumen/Watt
Luminous Efficiency	100 lumen/Watt
Energy Savings	0,85
Energy Savings	0,83
Dimmable	No
Electrical Protection Class	Class I

### Electrical Component Specifications

Component Fitting Type	Internal Driver
Driver Input Voltage	220-240 Volt
Driver Input Current	0,048 Amper
Driver Input Current	0,096 Amper
Detection Distance of Sensor	2-10 meters

### Lighting Characteristics

Luminous Flux	950 lumen
Luminous Flux	2000 lumen
Time for 60% of Lumen	<0.5 seconds
Light Beam Angle	120°
Flicker	No
LED Type	SMD
LED Type	SMD 2835

### Mechanical Parameters

IP Protection Class	IP44
Switch On/Off Cycle	15000
Lifetime	25000 hours
Body Material	Glass & Aluminum
Body Colour	Black
Body Colour	Dark Grey
Diffuser Material	Tempered Glass
Product Height	110 millimeter
Product Height	140 millimeter
Product Width	168,4 millimeter
Product Width	199,4 millimeter
Product Depth	25 millimeter
Ambient Temperature (Ta)	-20°C<Ta<50°C

### Logistic Informations

Inbox Length	185 millimeter
Inbox Width	50 millimeter
Inbox Height	120 millimeter
Outbox Length	385 millimeter
Outbox Length	380 millimeter
Outbox Width	325 millimeter
Outbox Width	315 millimeter
Outbox Height	270 millimeter
Outbox Height	255 millimeter
Outbox Volume	0,03378 m <sup>3</sup>
Outbox Volume	0,03052 m <sup>3</sup>
Outbox Quantity	24 pieces
Unit Net Weight	0,275 kilogram
Unit Net Weight	0,304 kilogram
Outbox Net Weight	6,6 kilogram
Outbox Net Weight	7,3 kilogram
Outbox Gross Weight	8,22 kilogram
Outbox Gross Weight	8,3 kilogram

IMPORTANT NOTES: VITO reserves the right to change/remove models or specifications partially/completely without any notice. Information, models and photographs of the products in this technical datasheet can not be used, reproduced or republished without permission. However, some parts can be quoted by giving reference and/or chapter number belonging to technical datasheet. Most of the items in the datasheet have been designed by our company within indicated technical specifications inside. Our company is not responsible for errors caused by wrong installation and operating against rules according to qualifications specified in the product details. Photographs printed in this datasheet may not reflect the actual color of the product depending on printing conditions. In the same context, typographical errors may possibly be found in the texts.